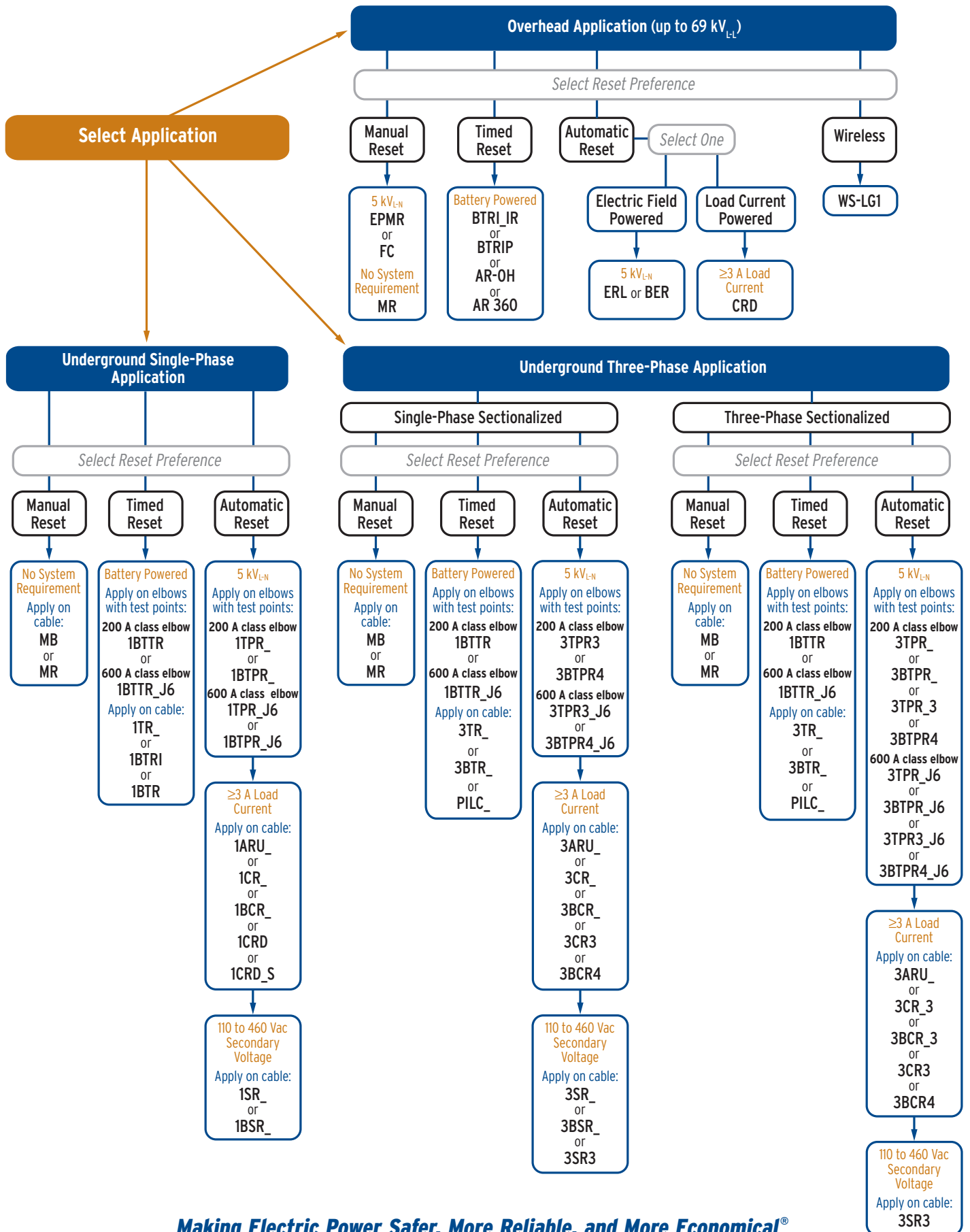




SEL Fault Indicator Selection Guide



SEL Fault Indicators



Overhead Fault Indicators



WS—Wireless Overhead Sensor



AR 360—360° Overhead AutoRANGER®



AR-OH—Overhead AutoRANGER



BTRIP—BEACON® Field-Programmable Timed Reset



BTRI_IR—BEACON Timed Reset



BER—BEACON Electrostatic Reset



ERL—Electrostatic Reset



CRD—Current Reset

Underground Fault Indicators



AR-URD—Underground AutoRANGER



TPR—Test Point Reset



TR—Timed Reset



CR—Current Reset



MB—Manual Reset With Reset Button



MR—Manual Reset



PILC—Paper-Insulated Lead Cable Fault Indicator



SR—Secondary/Low-Voltage Reset



GFD—Ground Fault Detector



RadioRANGER®—Wireless Fault Indication System



SCHWEITZER ENGINEERING LABORATORIES, INC.
 Tel: +1.509.332.1890 • Fax: +1.509.332.7990 • www.selinc.com • info@selinc.com
 Pullman, Washington USA

© 2010 by Schweitzer Engineering Laboratories, Inc. PF00220 • 20100115

